

0401/205(a)
0401/211(a)
PATTERN DRAFTING (PRACTICAL)
June/July, 1992
Time: 4 hours

THE KENYA NATIONAL EXAMINATIONS COUNCIL

ARTISAN CERTIFICATE

GARMENT MAKING

PATTERN DRAFTING (PRACTICAL)

4 hours

INSTRUCTIONS TO CANDIDATES

You should have the following for this examination:

1. 30cm rule
2. 1 Metre rule
3. Set squares
4. Curves
5. Tape Measure
6. Tracing wheel / Pair of compasses
7. Rubber
8. Two sheets of brown paper- each 100cm long x 80cm wide.
9. Cellotape
10. Paper pins.

Answer **ALL** questions.

This paper consists of 3 printed pages

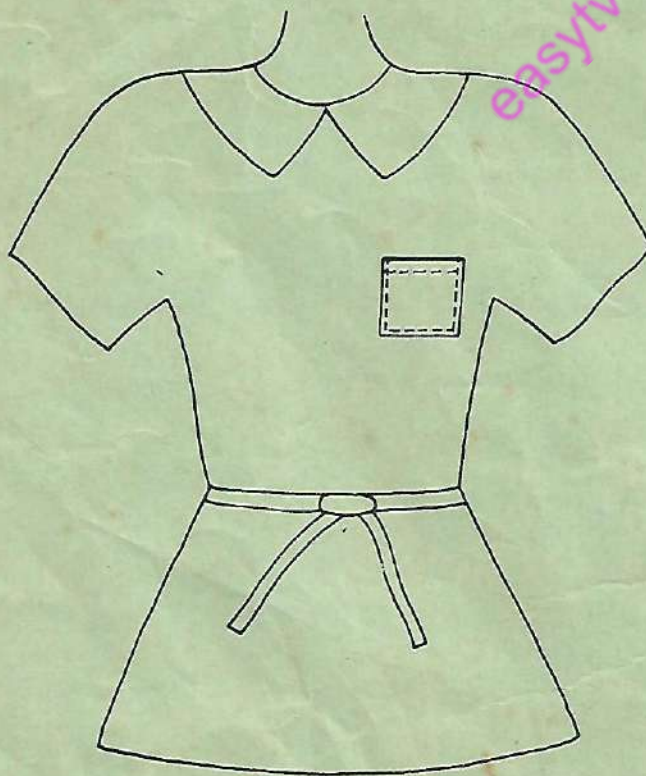
© 1992, The Kenya National Examinations Council

TASKS

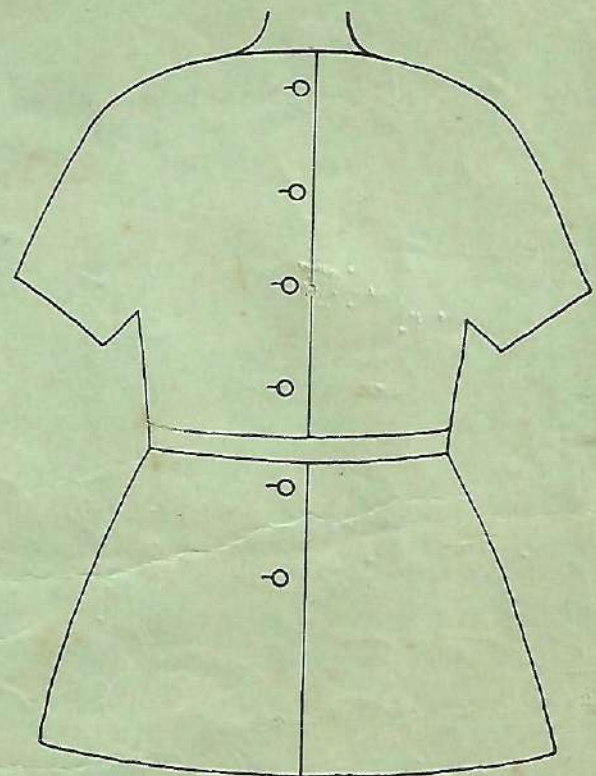
1. Using the measurements given, draft the basic patterns for the blouse style sketched below. Show all the stages of drafting, label the main construction lines and pattern pieces. Shape waist at the side seam by 1.5cm.

NOTE: DO NOT CUT OUT THE BASIC PATTERN PIECES.

2. (a) Trace out the basic pattern pieces onto a new sheet of brown paper develop the style and produce final pattern pieces.
(b) Extend from the shoulders 20cm for Kimono sleeve which is cut with the bodice.
(c) Add: - 1cm seam allowance for sideseams, shoulder seams and pocket.
- 0.7 on neckline
- 2cm hem on sleeve and lower edge
- 2cm for button extension and 5cm for extended facing.
(d) Draft the belt using $\frac{1}{2}$ length only.
3. Label all the final pattern pieces and indicate the number to cut, grain / fold lines and balance marks on the patterns.



FRONT VIEW



BACK VIEW

0401/205(a)

0401/211(a)

MEASUREMENTS:

Bust - 92cm

Shoulder - 13cm

Neck - 7cm

Waist to hip - 21cm

Hips - 98cm

Length of Kimono sleeve - 20cm

Bottom hem for sleeve - width - 33cm

Chest - 40cm

Back width - 36cm

Collar width - 7cm

Pocket - 12cm x 14cm long

Full blouse length - 61cm

Finished Belt length - 160cm x 3cm wide.

easytv.com